



Code: UKCAL-CWF-CON-EIA-RPT-00002-2001

Volume 2 Proposed Development (Offshore)

Chapter 1 Introduction

Caledonia Offshore Wind Farm Ltd

5th Floor Atria One, 144 Morrison Street, Edinburgh, EH3 8EX



Volume 2 Proposed Development (Offshore) Chapter 1 Introduction

Code	UKCAL-CWF-CON-EIA-RPT-00002-2001
Revision	Issued
Date	18 October 2024



Table of Contents

1 Introduction 1



List of Figures

Figure 1-1 Proposed Development (Offshore) Application Areas3

Acronyms and Abbreviations

EIAR	Environmental Impact Assessment Report
MD-LOT	Marine Directorate Licensing and Operations Team
MHWS	Mean High Water Springs

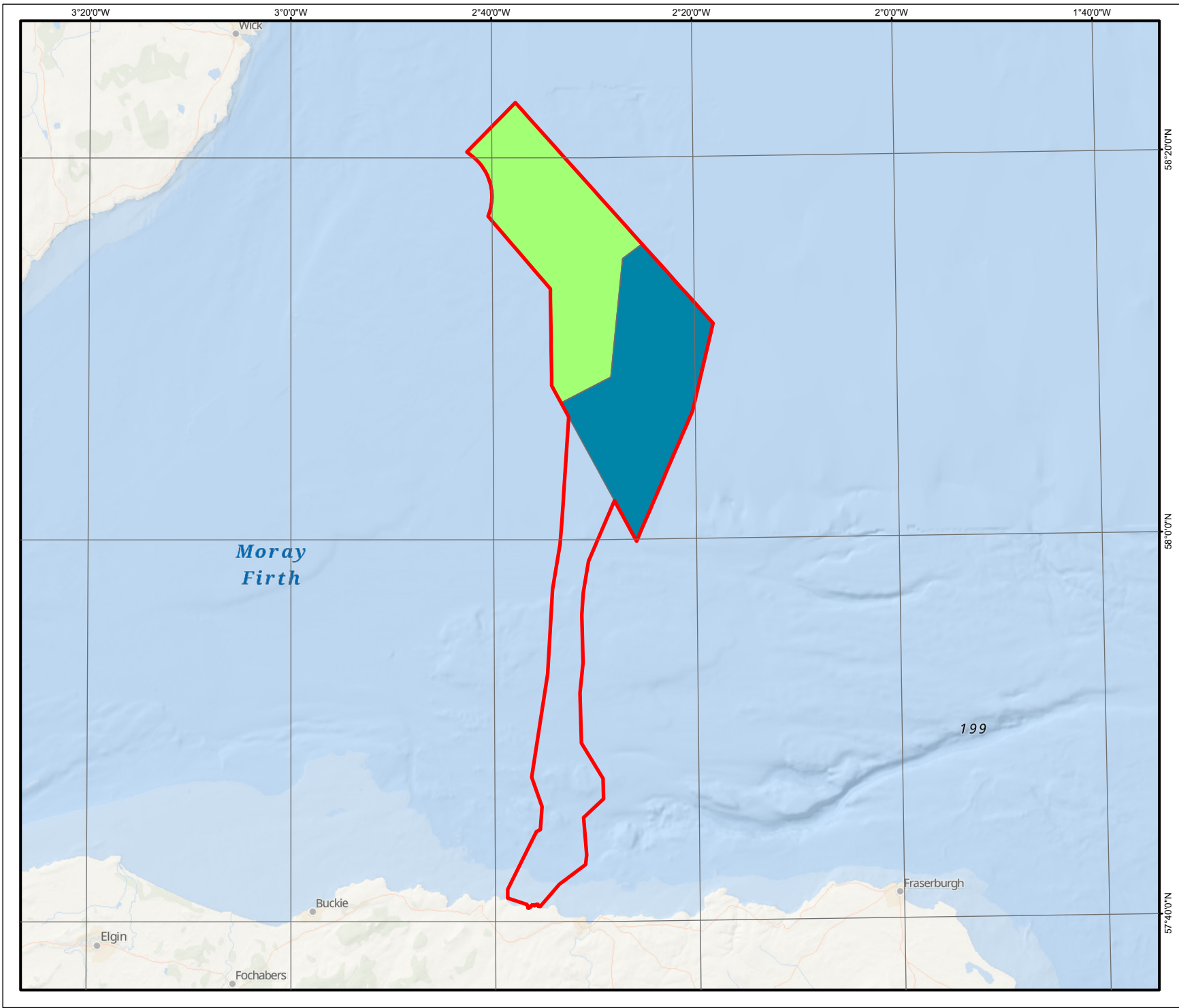
1 Introduction

- 1.1.1.1 Volume 2 of the Environmental Impact Assessment Report (EIAR) for the Proposed Development contains the offshore impact assessment for Caledonia North and Caledonia South consent applications in combination with one another which collectively make up the Proposed Development (Offshore). The Proposed Development (Offshore) comprises all offshore components located seaward of Mean High Water Springs (MHWS), refer to Figure 1-1. A description of the Proposed Development (Offshore) is provided in Volume 1 Chapter 3: Proposed Development (Offshore) Description.
- 1.1.1.2 The impact assessment presented in this volume considers the potential effects associated with the construction, operation and decommissioning of the Proposed Development (Offshore). Topic assessments presented in this volume include the following technical chapters:
- Volume 2 Chapter 2: Marine and Coastal Processes
 - Volume 2 Chapter 3: Marine Water and Sediment Quality
 - Volume 2 Chapter 4: Benthic Subtidal and Intertidal Ecology
 - Volume 2 Chapter 5: Fish and Shellfish Ecology
 - Volume 2 Chapter 6: Offshore Ornithology
 - Volume 2 Chapter 7: Marine Mammals
 - Volume 2 Chapter 8: Commercial Fisheries
 - Volume 2 Chapter 9: Shipping and Navigation
 - Volume 2 Chapter 10: Marine Archaeology and Cultural Heritage
 - Volume 2 Chapter 11: Military and Civil Aviation
 - Volume 2 Chapter 12: Seascape, Landscape and Visual Impact Assessment
 - Volume 2 Chapter 13: Other Human Activities
 - Volume 2 Chapter 14: Summary and Conclusions
- 1.1.1.3 Each technical chapter of this volume contains:
- Legislation, Policy and Guidance: a summary of the relevant legislation, policy and guidance that has been taken into account in assessing each topic;
 - Stakeholder Engagement: a summary of the consultation undertaken and responses received to date from statutory and non-statutory consultees through the Scoping Opinion and direct consultation;
 - Baseline Characterisation: a description of the existing environmental baseline condition, drawing on relevant data sources;
 - EIA Approach and Methodology: topic detail on the approach to assessment, particularly where this assessment methodology deviates from the general approach set out in Volume 1 Chapter 7: EIA Methodology;

- **Key Parameters for Assessment:** a summary of the worst case scenario assessed based on the design envelope of the Proposed Development (Offshore);
- **Potential Effects:** an assessment of the significance of any identified effects during construction, operation, maintenance and decommissioning, taking account of the magnitude of impact, sensitivity of receptor and any embedded mitigation;
- **Cumulative Effects:** an assessment of any cumulative effects arising from interaction between the Proposed Development (Offshore) and other plans, projects or activities;
- **In-combination Effects:** an assessment of the potential for significant effects resulting from multiple different effects upon the same receptor;
- **Transboundary effects:** an assessment of any impacts arising from the Proposed Development (Offshore) on the environment of other countries/territorial waters;
- **Mitigation Measures and Monitoring:** identification of any further (secondary) mitigation measures required;
- **Residual Effects:** identification of residual effects, taking into account further mitigation (where necessary) and/ or monitoring requirements; and
- **Summary of Effects:** a summary of the significant effects assessed.

1.1.1.4

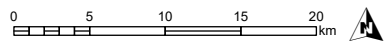
The results of the impact assessment presented in this volume seek to provide Marine Directorate Licensing and Operations Team (MD-LOT) and other key stakeholders with the relevant information regarding the likely significant environmental effects of Caledonia North and Caledonia South in combination with each other. These results ultimately intend to inform the decision making process and responses from stakeholders to the consent applications.



- Proposed Development (Offshore) Application Area
- Extent of Caledonia North Array Area Section 36 and Generation Marine Licence
- Extent of Caledonia South Array Area Section 36 and Generation Marine Licence

Contains OS data © Crown Copyright and database right 2024. Service Layer Credits: Esri UK, Esri, TomTom, Garmin, Foursquare, FAO, METI/NASA, USGS, OceanWise, Esri, GEBCO, Garmin, NaturalVue, Esri UK, Esri, TomTom, Garmin, FAO, NOAA, USGS, OceanWise, Esri, Garmin, NaturalVue

© Caledonia Offshore Wind Farm Ltd © 2023. This document is the property of contractors and sub-contractors and shall not be reproduced nor transmitted without prior written approval.



03	30/08/2024	Approved	CW	GS	EC
02	20/07/2024	For Review	CW	GS	EC
01	17/05/2024	For Review	CW	JN	EC
REV	DATE	DOC STATUS	ORIGIN	REVIEW	APP



CONTRACTOR DRAWING NO UKCAL1_ARP_WNF_ENV_MAP_00464	CONTRACTOR REV 03
---	----------------------

GEODETIC PARAMETERS
WGS 84 / UTM Zone 30N (EPSG:32630)

DRAWING TITLE
**Figure 1-1:
Proposed Development (Offshore)
Application Areas**

STATUS Approved	SCALE 1:500,000
DRAWING NUMBER N/A	SHEET NO 01 of 01
	REV N/A

Caledonia Offshore Wind Farm
5th Floor, Atria One
144 Morrison Street
Edinburgh
EH3 8EX

www.caledoniaoffshorewind.com

